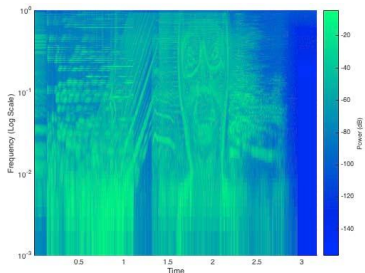


Further Additive Synthesis Examples: Aphex Twin Demo

Recall recreating the Aphex Twin Spectrogram is another example of Inverse Fourier Transform Additive Synthesis where essentially “paints” in sinusoids based image intensity and pixel location and then adds them together.



For code example see: [Ch5_2_Additive_Synthesis.mlx](#)